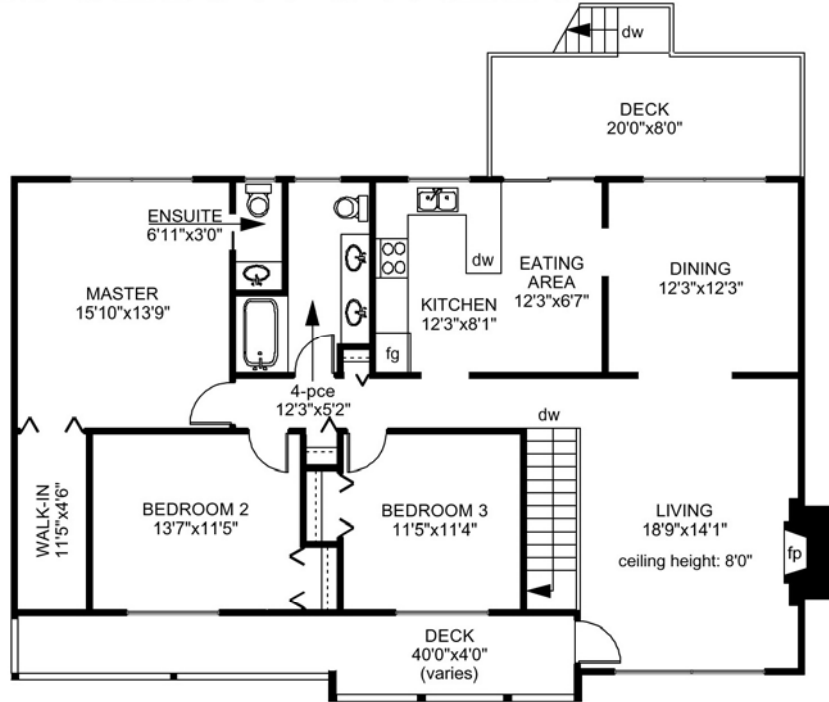
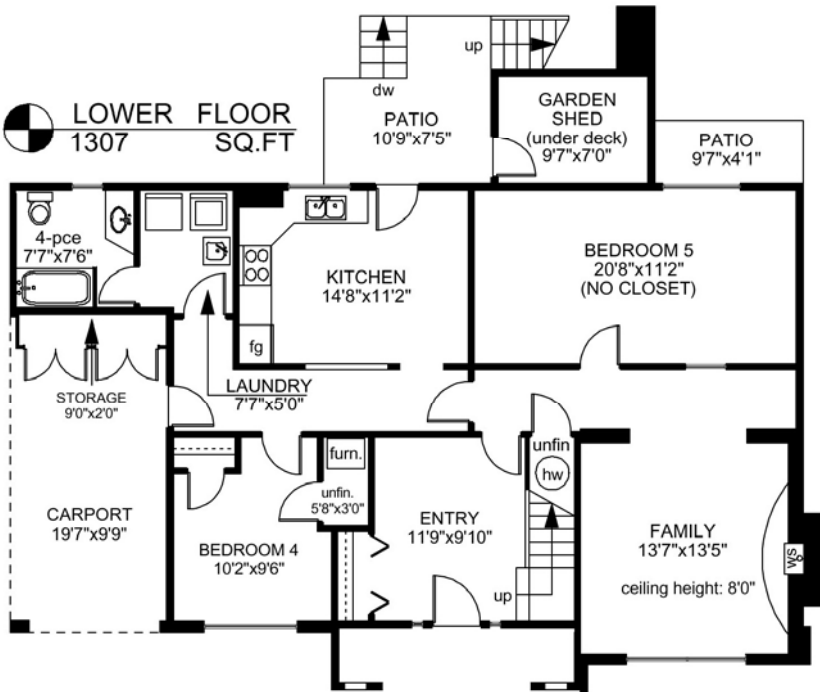


2259 EDGELOW STREET

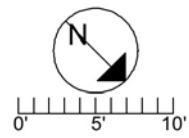
MAIN FLOOR
1512 SQ.FT



LOWER FLOOR
1307 SQ.FT



SHED
163 SQ.FT



	FINISHED SQ. FT.	UNFINISHED SQ. FT.	TOTAL SQ. FT.
MAIN	1512	0	1512
LOWER	1282	25	1307
TOTAL	2794	25	2819
DECKS	0	334	334
PATIOS	0	133	133
CARPORT	0	184	184
GARDEN SHED	0	98	98
WORKSHOP	0	163	163

**PEMBERTON
HOLMES**

• ESTABLISHED 1887 •

PREPARED FOR THE EXCLUSIVE USE OF
ANDREW MARA, RILEY JANES & SHAWN ADYE
OF PEMBERTON HOLMES LIMITED

MEASURED ON: 02/12/09
DRAWING FILE: 07959

Tafe Measure VICTORIA, B.C.
Ph. 883.8894
www.tafemeasure.com